

# MUSTANG PROJECT

## KEY DECAL PLACEMENT FOR 64.5 THROUGH 67 MUSTANGS



**THIS ENGINE IS FACTORY EQUIPPED WITH**  
**AUTOLITE SPARK PLUGS**  
 ENGINEERED TO MAXIMIZE YOUR 1966-67 Mustang's performance for  
 MAXIMUM REPLACEMENT ENGINE PERFORMANCE SEE SERVICE SPECIFICATIONS  
 Universal on any engine. Location #1

**170**  
 CUBIC INCHES  
 Engine Code U, 1965. Location #3

**200**  
 CUBIC INCHES  
 Engine Code T, 1965-68. Location #3

**MUSTANG-POWERED**  
**SPRINT 200**

\*Engine Code T, 1966. Location #3

**260**  
 CUBIC INCHES  
 Engine Code F, 1965. Location #3

**289**  
 CUBIC INCHES  
 Engine Code A 1965-68  
 Location #3

**289**  
 CUBIC INCHES  
 4V-PREMIUM FUEL  
 Engine Code C, 1965-67  
 Location #3

**SPORTS**  
**SPRINT**  
 \*\*Engine Code A, 1967  
 Location #3

**302**  
 CUBIC INCHES  
 Engine Code F, 1968  
 Location #3

**302**  
 CUBIC INCHES  
 4V-PREMIUM FUEL  
 Engine Code J, 1966. Location #3

### ENGINE COMPARTMENT DETAILING DECALS

ILLUSTRATIONS ARE APPROXIMATELY 1/2 ACTUAL SIZE

**390**  
 CUBIC INCHES  
 Engine Code H, 1967/68.  
 Location #3

**390**  
 CUBIC INCHES  
 4V-PREMIUM FUEL  
 Engine Code S, 1967/68.  
 Location #3

**289**  
 CUBIC INCHES  
**HIGH PERFORMANCE**  
 Engine Code K, 1965-67.  
 Location #3

**302**  
 CUBIC INCHES  
**HIGH PERFORMANCE**  
 Engine Code J, 1966.  
 Location #3

**390**  
 CUBIC INCHES  
**HIGH PERFORMANCE**  
 Engine Code S, 1967.  
 Location #3

**FORD**  
**AIR CONDITIONER**  
 FORD MOTOR CO.  
 DEARBORN, MICH.  
 MAX. OPERATING CHARGE: 1 POUNDS OF R-12  
 COMPLIES WITH SAE J639

A/C compressor service specifications. Location #6.  
 1965-68.

**FUEL**  
**FILTER**  
 FOR SERVICE  
 INSTRUCTIONS  
 SEE OWNERS  
 MANUAL

**FoMoCo**  
 FORD MOTOR COMPANY

Fuel filter. Manufacturer's label.  
 Location #3

SEE OWNER MANUAL FOR  
 CAP, 9500 AD\*

Air filter part number. Location #2.

**FRONT**

A/C cleaner placement. Location #5. All  
 Years.

**BATTERY OK**

CHARGE	DATE	SIGNATURE

Battery inspection tag. Location #7.  
 All Years.

**1965-66 ENGINE SERVICE SPECIFICATIONS**

<b>ENGINE OIL GRADE</b> SAE 10W-30 (SAE 20W-50 for 1965-66 Mustangs with 289 cu. in. engines)	<b>WATER PUMP DRIVE</b> SAE 10W-30 (SAE 20W-50 for 1965-66 Mustangs with 289 cu. in. engines)
<b>ENGINE OIL GRADE</b> SAE 10W-30 (SAE 20W-50 for 1965-66 Mustangs with 289 cu. in. engines)	<b>WATER PUMP DRIVE</b> SAE 10W-30 (SAE 20W-50 for 1965-66 Mustangs with 289 cu. in. engines)

**1967-68 ENGINE SERVICE SPECIFICATIONS**

<b>ENGINE OIL GRADE</b> SAE 10W-30 (SAE 20W-50 for 1967-68 Mustangs with 289 cu. in. engines)	<b>WATER PUMP DRIVE</b> SAE 10W-30 (SAE 20W-50 for 1967-68 Mustangs with 289 cu. in. engines)
<b>ENGINE OIL GRADE</b> SAE 10W-30 (SAE 20W-50 for 1967-68 Mustangs with 289 cu. in. engines)	<b>WATER PUMP DRIVE</b> SAE 10W-30 (SAE 20W-50 for 1967-68 Mustangs with 289 cu. in. engines)

**1967-68 ENGINE SERVICE SPECIFICATIONS**

1965-66 Engine Service Specifications. Location #8.

**1967-68 ENGINE SERVICE SPECIFICATIONS**

<b>ENGINE OIL GRADE</b> SAE 10W-30 (SAE 20W-50 for 1967-68 Mustangs with 289 cu. in. engines)	<b>WATER PUMP DRIVE</b> SAE 10W-30 (SAE 20W-50 for 1967-68 Mustangs with 289 cu. in. engines)
<b>ENGINE OIL GRADE</b> SAE 10W-30 (SAE 20W-50 for 1967-68 Mustangs with 289 cu. in. engines)	<b>WATER PUMP DRIVE</b> SAE 10W-30 (SAE 20W-50 for 1967-68 Mustangs with 289 cu. in. engines)

**1967-68 ENGINE SERVICE SPECIFICATIONS**

1967-68 Engine Service Specifications. Location #8.

## What's inside this Manual



Decal placement on classic mustangs is as much art as science. Production line Ford workers were given lots of leeway in exact decal placement.

Some decals were placed at odd angles and different labels were used on the same model year.

A common mistake by many mustang restorers is to place the Autolite spark plug label on the inner diameter of the air cleaner. It is cut to a larger radius and must fit at the outer edge of the air cleaner (Location #1).

Not shown are several of the various temporary labels on the battery and radiator which are secured via a wire tie.

Normally these labels were removed during normal maintenance or quickly disintegrated with use.

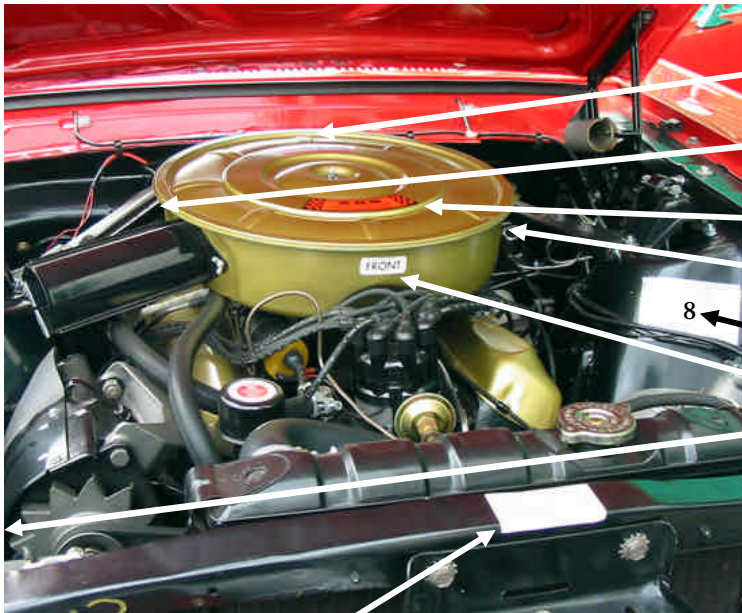
Labels are available for various sources throughout the web. Sources like [www.johnsmustang.com](http://www.johnsmustang.com), [www.dallasmustang.com](http://www.dallasmustang.com) and, [www.nationalpartsdepot.com](http://www.nationalpartsdepot.com) provide accurate label reproductions.

Since there was such variability in label placement be on the look out at mustang shows for how the best car owners place their labels.

Remember that the oil filter needs to be properly labeled too. [www.mustangproject.com](http://www.mustangproject.com) carries Rotunda gold label reproduction oil filters as shown below. These are constructed from Mobil 1 super efficient oil filters.

Don't forget the fuel filter label as shown below also!





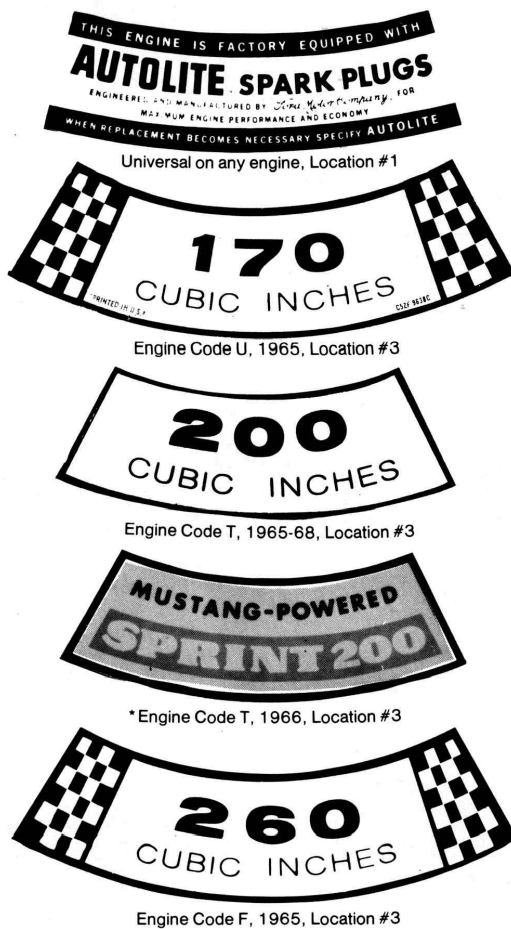
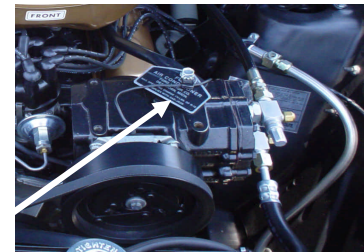
- Autolite spark plug orange, white and purple are shaped decal. Location #1**
- Air filter part number placed on right of air cleaner side. Location #2**
- Engine cubic inch displacement. Location #3**
- Early type Autolite rectangular decal. Location #4**
- Engine Service specifications. Location #8**
- Air cleaner placement decal. Location #5**
- "Battery OK" decal ( above battery on fender well). Location #7**

**Radiator service fluid decal.**

*\*used on chrome air cleaner with Sprint package.*

*\*\*Spring 1967 SPORTS SPRINT Appearance option.*

**Air conditioner compressor specifications. Location #6**



THIS ENGINE IS FACTORY EQUIPPED WITH  
**AUTOLITE SPARK PLUGS**  
 ENGINEERED AND MANUFACTURED BY Autolite Motor Company, FOR  
 MAXIMUM ENGINE PERFORMANCE AND ECONOMY  
 WHEN REPLACEMENT BECOMES NECESSARY SPECIFY AUTOLITE

Universal on any engine, Location #1

**170**  
 CUBIC INCHES

**200**  
 CUBIC INCHES

**MUSTANG-POWERED**  
**SPRINT 200**

**260**  
 CUBIC INCHES

**289**  
 CUBIC INCHES

**289**  
 CUBIC INCHES  
 4V-PREMIUM FUEL

**SPORTS**  
**SPRINT**

**302**  
 CUBIC INCHES

**302**  
 CUBIC INCHES  
 4V-PREMIUM FUEL

Engine Code U, 1965, Location #3

Engine Code T, 1965-68, Location #3

\* Engine Code T, 1966, Location #3

Engine Code F, 1965, Location #3

Engine Code A 1965-68  
 Location #3

Engine Code C, 1965-67  
 Location #3

\*\* Engine Code A, 1967  
 Location #3

Engine Code F, 1968  
 Location #3

Engine Code J, 1968, Location #3

## ENGINE COMPARTMENT DETAILING DECALS

ILLUSTRATIONS ARE APPROXIMATELY 1/2 ACTUAL SIZE



Engine Code H, 1967/68.  
Location #3



Engine Code S, 1967/68.  
Location #3



Engine Code K, 1965-67.  
Location #3



Engine Code J, 1968.  
Location #3



Engine Code S, 1967.  
Location #3



A/C compressor service specifications. Location #6.  
1965-68.



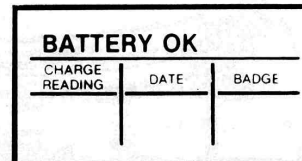
Fuel filter. Manufacturer's label.  
Location #9.



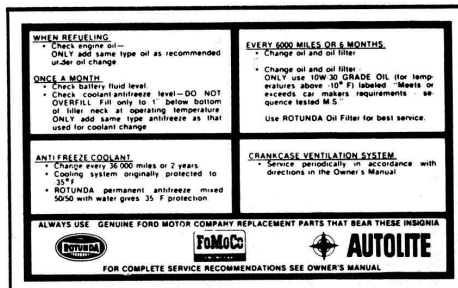
Air filter part number. Location #2.



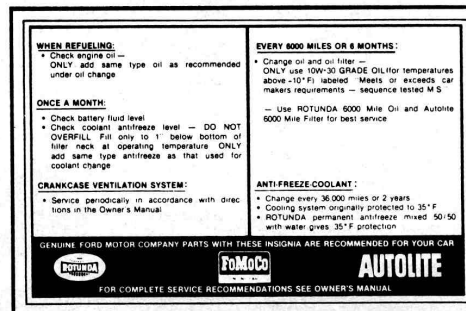
A/cleaner placement. Location #5. All Years.



Battery Inspection tag. Location #7.  
All Years.



1965-66 Engine Service Specifications. Location #8.



1967-68 Engine Service Specifications. Location #8.



Space Saver Spare inflation instructions. Location #10

Safety Act Decal. Location #11.

Tire Storage and Jacking Instructions. Location #12.

Tire Inflation instructions (Inside Glove Box). Location #13.

Manufacturer's Logo ( On Center of Scuff Plate). Location #14.

Space Saver Usage Decal. Location #15.

Jack Handle Decal. Location #16

Refer to location key above for placement. Year of useage is listed with each decal.

MUSTANG RECOMMENDED TIRE PRESSURES (COLD)		
ALL MODELS (except as noted below)	FRONT 24	REAR 24
HIGH PERFORMANCE MODELS AND OTHER VEHICLES WITH HIGH SPEED TIRES	28	28
FULL RATED LOAD—775 pounds MAXIMUM or driver plus three passengers and 175 pounds of luggage.		
For sustained legal speeds over 60 MPH, for one hour or more, add 4 pounds to the recommended pressures. Any driving over 90 MPH, see Owner's Manual.		
TRAILER TOWING—SEE OWNER'S MANUAL		

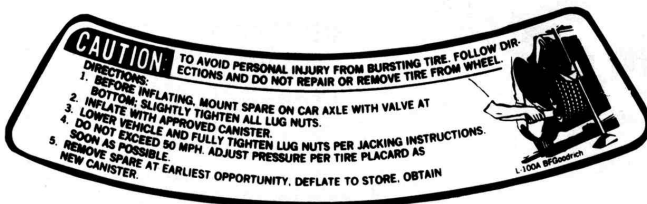
Tire Inflation Instructions. Location #13. Correct on either glove box liner or back of glove box door. 1965-66.

MUSTANG RECOMMENDED TIRE PRESSURES (COLD)		
CONVENTIONAL AND F70-14 TIRES	FRONT 24	REAR 24
RADIAL PLY TIRES	28	28
FULL RATED LOAD—775 pounds MAXIMUM or driver plus three passengers and 175 pounds of luggage.		
For sustained speeds over 75 MPH, for one hour or more, see Owner's Manual.		
TRAILER TOWING—SEE OWNER'S MANUAL		

Tire Inflation Instructions. Location #13. Correct on glove box liner or back of glove box door. 1967.

MUSTANG RECOMMENDED TIRE SIZE and INFLATION PRESSURE (COLD)						
MODEL	ENGINE C.I.D. SIZE	STANDARD TIRE		OPTIONAL TIRE		FRONT REAR
		SIZE	PRESSURE	SIZE	PRESSURE	
ALL EXCEPT GT OPTION	200	6.95-14	24 24	7.35-14	24 24	
	289 & 302	6.95-14	24 24	7.35-14	24 24	
	390	7.35-14	24 24	E70-14 F70-14 FR70-14*	24 24 24 24 28 28	
GT OPTION	302 & 390	F70-14	24 24	FR70-14	28 28	
ALL	427 & 428	F70-14	28 28	FR70-14	28 28	
FR70-14 OPTIONAL ONLY WITH OPTIONAL SUSPENSION.						
FULL RATED (MAXIMUM) LOAD						
TOTAL LOAD = OCCUPANTS PLUS LUGGAGE						
MODELS	MAXIMUM LOAD (LBS)	TOTAL OCCUPANTS		DISTRIBUTION		LUGGAGE
		FRONT	REAR	FRONT	REAR	
ALL	775	2	2	2	2	175 LBS.
FOR SUSTAINED SPEEDS OVER 75 MPH OR TRAILER TOWING—SEE OWNER'S MANUAL						

Tire Inflation Instructions. Location #13.



Space Saver Usage Decal. Location #15. Placed on wheel rim area. Dealer installed — 1967, Factory — 1968.

FORD MOTOR COMPANY certifies in accordance with section 108, National Traffic and Motor Vehicle Safety Act of 1966, that this vehicle as originally delivered at its assembly plant conformed to all federal motor vehicle safety standards applicable at date of manufacture. The certification does not extend to modifications or additions to this vehicle made by others. C8AB6220472 A

Safety Act Decal. Location #11. Wording changed on Shelybs to: Shelyb American Inc. certifies etc. — Part number also reflects S8MS6220472A.

SEE OWNER'S MANUAL FOR JACKING INSTRUCTIONS

Small referral decal placed on jack handle. Location #16. All years.

Manufacturer's scuff plate logo. Location #14. Black Ford oval in 1965/66.



Manufacturer's scuff plate logo. Location #14. Blue Ford oval. Used only in 67.



Manufacturer's scuff plate logo. Location #14. Blue Ford oval. used 1968 on.



## 1965-68 TIRE JACK USAGE AND STOWAGE DECALS.

Illustrations are approximately 1/2 actual size.

Refer to keyed photo for placement.

1965-66 Jack usage and stowage decal. Location #12.

**JACKING INSTRUCTIONS**

CAUTION: PARK VEHICLE ON LEVEL SPOT WHEN POSSIBLE. SET PARKING BRAKE, PUT GEAR SHIFT IN REVERSE (PARKED POSITION FOR AUTOMATIC SHIFT). BLOCK DIAGONALLY OPPOSITE WHEEL BEFORE JACKING. DO NOT GET UNDER CAR WHEN JACK ASSEMBLY IS BEING USED. CAR MUST BE ABOUT 15 IN. FROM CURB BEFORE JACKING.

FOR TIRE CHANGING, LOCATE JACK ASSEMBLY AT NOTCH IN FLANGE UNDER ROCKER PANEL. SEE SKETCH.

SET HANDLE RATCHET FOR CLOCKWISE OPERATION AND RAISE JACK ASSEMBLY UNTIL TIRE CLEARS GROUND. TO LOWER, REVERSE HANDLE RATCHET AND OPERATE UNTIL JACK ASSEMBLY CLEARS BODY.

SEE OWNERS MANUAL FOR DETAILED INSTRUCTIONS.

**JACK STOWAGE INSTRUCTIONS**

1. LAY HANDLE PARALLEL TO TAPERED WALL IN FLOOR.
2. OPEN JACK ASSEMBLY 3.5 IN. FROM FULLY CLOSED POSITION AND LAY FLAT ON FLOOR WITH BASE AGAINST TAPERED WALL. NOTE: END OF JACK ASSEMBLY MUST BE ROTATED TO POINT TOWARD FUEL FILLER PIPE AS SHOWN.
3. POSITION SPARE WHEEL. VALVE STEM UP, INSERT BOLT AND PLATE AS SHOWN.
4. FASTEN SECURELY WITH SPARE WHEEL MOUNTING NUT.

CSZB-17093-A

### SPACE SAVER SPARE

#### INFLATION INSTRUCTIONS

- 1 Remove space saver spare tire from car and place on ground.
- 2 Remove valve cap from tire valve stem.
- 3 Attach inflator bottle by following instructions shown on inflator bottle label.  
CAUTION: Hold bottle by cardboard container since bottle becomes extremely cold during tire inflation.
- 4 When gas ceases to discharge into tire (approximately 2 minutes), remove empty bottle. Replace valve cap. Tire is now ready to use.  
To deflate the space saver for stowage, use end of valve cap to remove valve core. When deflated replace core and cap.

**INFORMATION:** The space saver spare tire with which your new car is equipped gives you approximately 25% more luggage space. The tire was designed for limited usage to enable you to drive to the nearest tire service center to effect repairs to the disabled tire. In addition, the tire has undergone testing to assure reliability, stability during handling maneuvers, and adequate speed performance. Use of the tire for extended periods of time as a substitute for conventional tires is not recommended.

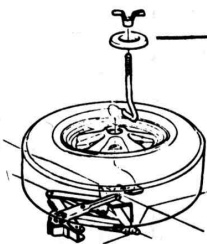
**CAUTION:** DISPOSE OF CAN. DO NOT INCINERATE OR PUNCTURE.

CBWA-1532-E

1967-68 Space Saver Usage and inflation instructions. Location #10.

1967-68 Jack and tire, usage and stowage instructions. Location #12.

Illustration of jack and tire stowage for styled steel wheels.



### JACK USAGE and STOWAGE

**CAUTION:** SET PARKING BRAKE AND BLOCK DIAGONALLY OPPOSITE WHEEL BEFORE JACKING.

SEE OWNER'S MANUAL FOR DETAILED INSTRUCTIONS.

**CAUTION:** DO NOT GET UNDER CAR WHILE IT IS SUPPORTED BY JACK ALONE.

CZ2B 17093-D

## Mustang Project by SafeCode Inc.

Phone: 512-751-7864  
E-mail: [mustang@safecode.net](mailto:mustang@safecode.net)

---

WE'ER ON THE WEB  
[WWW.MUSTANGPROJECT.COM](http://WWW.MUSTANGPROJECT.COM)

---

The Mustang Project how-to manuals are designed to save you hours of work and enable you to create a more reliable and professional installation.

Mustang Project manuals are different. They are specific and detailed. The manuals all describe one specific project and in greater detail than ever before provided. You know that when you invest in a Mustang Project manual it will save you hours of work and give you a better result.

We hope that you have found this manual useful please leave us your feedback via. E-mail or phone!

# Coming Mustang Project Manuals

*All of these exciting new manuals are in the works at Mustang Project.*

- **Front disk Brake Upgrade for Your 64 1/2 65 or 66 Mustang!**
- **Restoring the Interior of your Mustang.**
- **Autolite Carburetor Rebuild.**
- **Restoring your exhaust system.**
- **Concurs Correct Label Restoration.**
- **Detailing the Underside of your Car.**
- **Repaint Your Car for a Concours Finish!**



*Look for these exciting new title in your favorite book store or on the web at [www.mustangproject.com](http://www.mustangproject.com)*



Published by SafeCode Inc. Austin Texas 78613